



## **Installation** Instructions

### AQ-5300 Under Counter Water Filter

Welcome to the Aquasana experience. You are about to enjoy clean, healthy water and the peace of mind that comes from knowing award-winning filter technology is working for you.

Installation must comply with state and local laws.



- A** AQ-5300 filter unit
- B** Faucet (1)
- C** Filter Cartridges (3)
- D** Screws with anchors (2)
- E** Faucet Rubber Washer (1)
- F** Faucet Spacer (1)
- G** Faucet Washer (1)
- H** Faucet Nut (1)
- I** 3/4" Outlet Poly tubing (1)
- J** Chrome nut (1)
- K** Plastic collar (2)
- L** Plastic tube insert (1)
- M** 3/4" Inlet Poly tubing (1)
- N** Brass nut (1)
- O** Brass tube insert (1)
- P** Brass Tee (1)

## Preparing for Installation

Please read entire installation guide before installing the filter system.

The faucet may be mounted on the sink using an existing hole for a sprayer nozzle or soap dispenser, or by drilling a hole at least 13mm in diameter. Be sure the location of the faucet allows the spout to extend slightly past the edge of the sink. Note: we recommend enlisting the services of an approved or certified professional if drilling is required.

## Tools Recommended for Installation

- Variable speed drill with 6mm bit
- Adjustable wrench
- Measuring tape
- Bucket
- Phillips head screwdriver
- Hammer

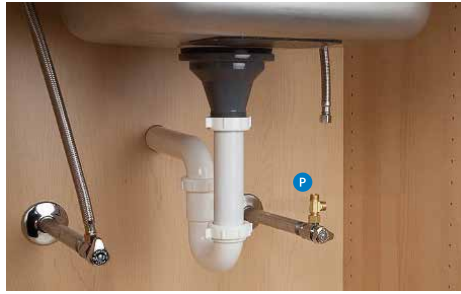
Before beginning installation, please ensure all parts listed are present. If any part is missing or damaged, do not attempt to install the filter. Please contact Customer Service for replacement parts at 400 008 2132.

**Estimated Installation Time:** 45 minutes

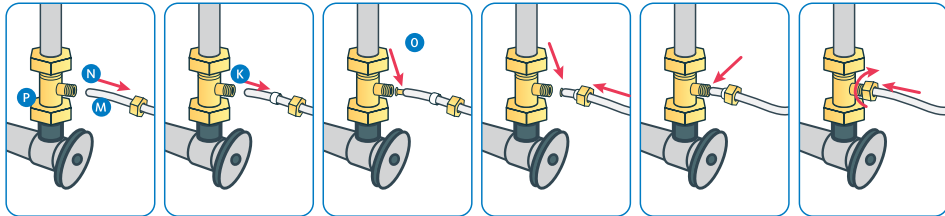
# Easy to install



**1** Unpack and unwrap contents. Turn off and disconnect the cold water supply.



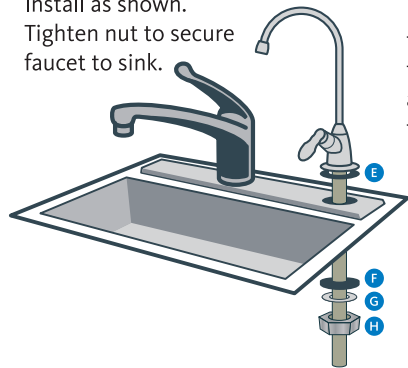
**2** Attach threaded ends of supplied brass tee to the cold water supply line and shut-off valve; tighten using an adjustable wrench.



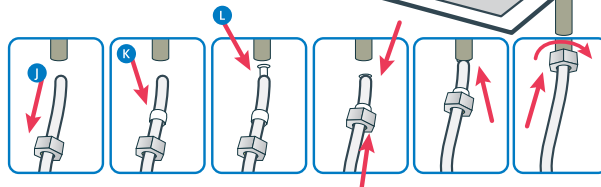
**3** Attach white tube to the brass tee: Slide the compression nut onto the white tubing (with threads of the nut facing the end of the white tube). Next, slide the plastic sleeve onto the white tube. Place brass insert into the opening of white tube. Push the tip of the white tubing into the opening of the brass tee. While holding the white tube in place inside the brass tee, tighten the compression nut to compress the plastic sleeve and create a seal. NOTE: Use a wrench to ensure complete seal. Avoid over tightening.



**4** Faucet Installation: Install as shown. Tighten nut to secure faucet to sink.



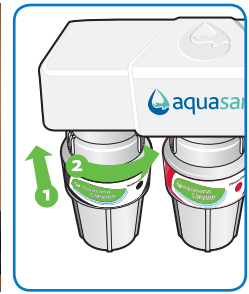
**5** Faucet Connection: connect the outlet hose to the base of the faucet by sliding the chrome nut onto the tube followed by the white collar. Place the white insert into the end of the tube. Press the tube against the faucet base and slide the nut and collar up to the threads. Use wrench to ensure seal is sufficiently tight. Note: Avoid over tightening.



**6** Unit Installation: Select a space under your sink for the filter unit that is at least 30cm from the bottom of your cabinet and allows for easy access to your cold water supply and for filter replacements. Use the mounting holes located at the back of the unit to mark the wall screw placements with a pencil. Center to center hole distance: 98mm.



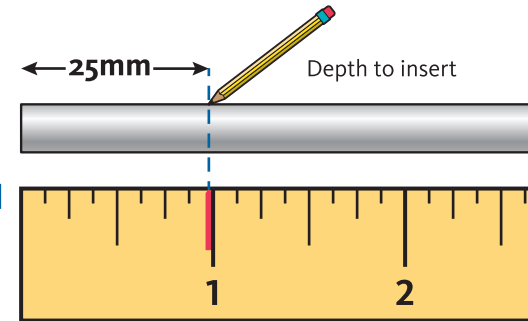
**7** Use a 6mm drill bit to drill holes for the plastic anchors. Carefully tap the anchors into the drilled hole with a hammer. Mount unit to the wall with the screws. Pull the protective plastic strip from the battery compartment. The red LED should flash and beep five (5) times to indicate that the battery is installed correctly.



**8** Attach each sump to the bottom of the unit housing. Align connection points, push the sump up and turn to the right. Ensure that the sump is locked in.



**9** Connect supply lines: insert tubing from the tee fitting into the inlet side and insert tubing from the faucet into the outlet side. Use diagram on the right to mark tubing depth to ensure they get inserted completely. **It is VERY IMPORTANT to insert tubing completely so leaking does not occur.**



(Diagram is actual size)



**10** Turn the cold water on. Check for leaks and proper installation: place a towel under the filter unit and check for leaks. Allow water to run for 10 minutes to flush carbon fines. Note: Never use oils to lubricate the O-rings; O-rings come pre-lubricated.

## Care and Maintenance

To clean your filter unit, wipe down the exterior with a damp cloth.

Once filters are at 95% capacity (about every 6 months), the battery alarm will sound and flash red when water is flowing and will continue for 15 seconds once water is turned off. Change the battery every time you replace your filters. The battery is included with the filter replacement cartridges.

## Pure Satisfaction

You will enjoy a one-year warranty on your purchased product. Thank you for choosing Aquasana!

This filter system is designed and tested for use with genuine Aquasana parts, including replacement filters and all hardware except for the actual faucet.

Use of parts from other manufacturers may result in loss of contaminant reduction performance, system damage or failure. Use of parts from other manufacturers (besides the faucet) will also void your warranty. Please contact our local distributor or call 400 008 2132 for all replacement parts.

For conditions of use and replacement parts see product data sheet.

## Precautions:

- **Filter is only to be used with cold water.**
- If you experience a leak at the hose connection, disconnect and re-seat the hose.
- Aquasana is not liable for consequential or incidental damages due to improper installation.

## AQ-5300

Replacement cartridge:  
AQ-5300R

Rated service flow:  
1.9 lpm

Max capacity:  
2,270 Liters

Min working pressure:  
20 psi (1.40 kg/cm<sup>2</sup>)

Max working pressure:  
80 psi (5.62 kg/cm<sup>2</sup>)

Min operating temperature:  
40° F (4.44° C)

Max operating temperature:  
90° F (32.22° C)

**Do not use with water that is microbiologically unsafe or of unknown water quality without adequate disinfection before or after the system. Systems certified for cyst reduction may be used on disinfected waters that may contain filterable cysts.**



Manufacturer:  
**Aquasana, Inc.**  
6310 Midway Road  
Haltom City, Texas 76117, USA



System tested and certified by NSF International against NSF/ANSI Standard 42, 53, 401 and P473 for the reduction of the claims specified on the Performance Data Sheet and at [www.nsf.org](http://www.nsf.org).

Sole Distributor in China: Computime China Distribution (Hong Kong) Limited  
China Distribution Centre: Computime Trading (Shenzhen) Co., Ltd  
Room 501-G, 5<sup>th</sup> Floor, Block B, Jiuzhou Electric Building,  
Number 7 Science and Technology South 12<sup>th</sup> Road,  
Nanshan District, Shenzhen, Guangdong, China  
Customer Service Hotline: 400 008 2132  
Email: CS-CBD@computime.com